

Ray Starkie Best Game Trophy 2019-20 Season

Commentary by Matt Rose, Adjudicator

White: Tom Shepherd

Black: Will Burt

Cowley Cutlers v Bicester Bishops

Rose Hill Methodist Church 16/12/19

1.d4 d5 2.c4 e5 3.dxe5 d4 4.Nf3 Nc6 5.a3 Be6 6.e3 dxe3 7.Qxd8+ Rxd8 8.Bxe3 Nge7 9.Be2 Ng6 10.0-0 Be7 11.Ng5? White should get fully developed before embarking on decentralising moves. 11.Nc3 was better.

11...Nd4 12.Bxd4 Bxg5 13.Bc3?! Taking away the knight's square. Better was 13.Rd1

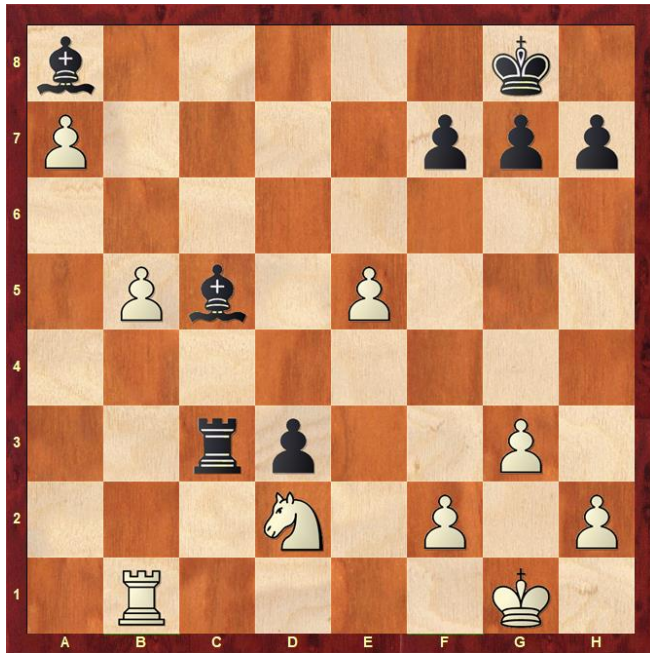
13...Nf4 14.Bf3 Bxc4 15.Rd1 0-0 16.Nd2 Be2 17.Re1 Ba6 18.Ne4 Be7 19.g3 Nd3 20.Red1 c5 21.Be2 c4 22.Bxd3?! cxd3 23.b4? This show on the queenside is unlikely to lead anywhere and just creates weaknesses. It would be better to prepare to bring the King closer with 23.f3.

23...b6 24.a4 Bb7 25.Nd2? True, the knight is great on d2 - blockading the pawn as Nimzowitsch recommends - but White's bishop also needs this square. Again, better was 25.f3.

25...Rd7! seemingly, hopping in the air to let the other rook by!

26.a5 Rc8 27.Rdc1 Rdc7 28.axb6 Desperate, but what else? 28.Nb1 Bxb4! was scarcely an improvement.

28...Rxc3 29.Rxc3 Rxc3 30.bxa7 Ba8 31.b5 Bc5 32.Rb1



32...Kf8! Seeing the finish, Will invites Tom to do his worst.

33.b6 Bxb6 34.Rxb6 Rc1+ 35.Nf1 d2! 36.Rb8+ Ke7 37.Rxa8 Rxf1+! Much cleaner than 37...d1Q 38.Re8+

38.Kg2 Ra1 0-1